

COMPANY PROFILE

LEADEPC HOUSE, GRAVITAS OFFICE PARK
17 VAAL DRIVE, SYLVIAVALE,
VANDERBIJLPARK, 1911
PO BOX 2659
VANDERBIJLPARK, 1900

+27 (0)16 933 3925

CONTACT@LEADEPC.COM



TABLE OF CONTENTS

PAGE

01

INTRODUCTION

What we do. Where we work.

PAGE

03

COMPANY MANAGEMENT SYSTEM

Certification, Policies, Safety.

PAGE

09

GROUP ACTIVITY

Clients, Sectors, Services.

PAGE

11

SPECIALITIES AND CAPABILITIES

Management, Engineering, Tools, Solutions.

PAGE

14

RENEWABLE ENERGY EXPERIENCE

Personnel and Scope of Projects.

PAGE

15

PROJECT PROFILE EXTRACTS

Details of Various Projects.





OUR COMPANY

MOTTO

“

*Lead from the front, in service,
excellence and commitment*

INTRODUCTION

LeadEPC

LeadEPC is an EPC company based in South Africa that was formed in 2012 in collaboration with Likusasa Engineering and Contracting, a Sub Saharan Engineering & Construction contractor.

CHIEF EXECUTIVE OFFICER

Hennie Engela
Hennie Engela



- **Level 1 BBBEE**
- **57.08% Black Owned**
- **47.95% Black Woman Owned**
- **More than 3.3m Manhours without Any Reportable Injury**

What we do...

- **Multi-Disciplined EPC**

LeadEPC specialises in Engineering, Procurement & Construction Projects.

- **Structural, Mechanical, Electrical, Instrumentation and Piping - SMEIP**

We use Partners for Civil Engineering and Construction

Where we work...

Lead EPC is currently active in:

Southern Africa | Western Africa |

Eastern Africa | The Middle East | Central Africa |

The Far East



COMPANY MANAGEMENT SYSTEMS

IMS : Integrated Management System



Quality Management Systems

ISO 9001:2015 - CERTIFIED

The Quality Management System (QMS) establishes the required systems, processes and procedures to provide services that aim to exceed the expectations of customers and satisfy external quality requirements.

ISO 45001:2018 - CERTIFIED

Conform to ISO 45001:2018 Safety Management System

ISO 3834 : Part 2 - CERTIFIED

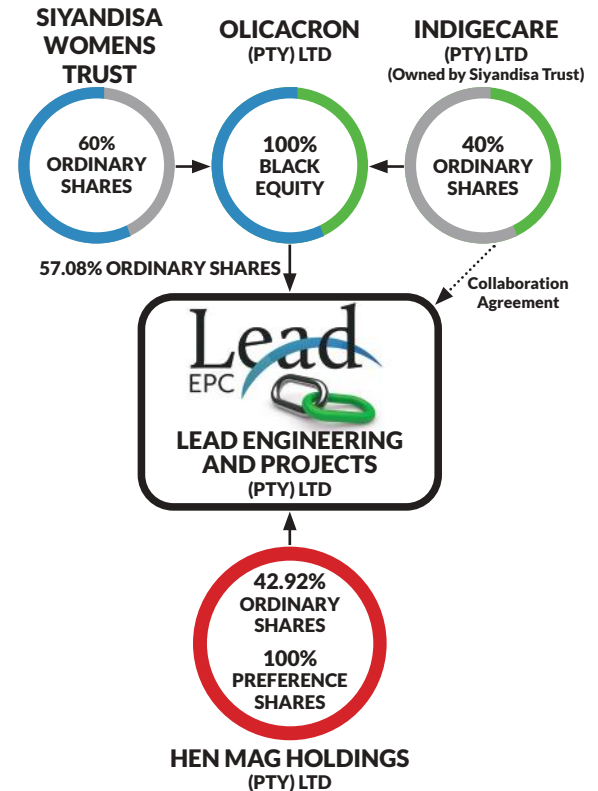
Quality requirements for fusion welding of metallic materials.

Part 2: Comprehensive quality requirements.

Certifications

- Level 1 BBBEE
- ISO 45001:2018
- ISO Certification for 9001:2015
- ISO 3834 Part 2
- CIDB 9EP EN 8ME

Shareholding



11 LeadEPC Policies

- HEALTH, SAFETY & ENVIRONMENTAL
- QUALITY
- ETHICAL BUSINESS & ANTI-FRAUD POLICY
- HUMAN RIGHTS & RESOURCES
- DRUGS & ALCOHOL
- COMMUNITY
- INDUSTRIAL RELATIONS
- EMPLOYEE PROTECTION - WHISTLE BLOWING
- VISION & MISSION
- CLIENT / CUSTOMER SERVICE & AVAILABILITY
- HIV / AIDS

Lead HSE Statistics

Safety First

Description	2021
Total Hours Office Staff year to date	14 608
Project Manhours worked by LeadEPC Employees year to date	68 340
Project Manhours worked by Subcontractors year to date	9 330
Total Manhours worked year to date	92 278
Calculating current total Manhours without LTI	3 305 562

COMPANY FOOTPRINT

Southern Africa

- Vanderbijlpark, South Africa
- Midrand, South Africa
- Secunda, South Africa
- Lusaka, Zambia
- Gaborone, Botswana
- Lilongwe, Malawi
- Big Bend, Swaziland
- Mocuba, Mozambique

Central Africa

- Tororo, Uganda

East Africa

- Mauritius

Far East

- Tokyo, Japan



West Africa

- Freetown, Sierra Leone

Middle East

- Bahrain

RESPECTED BLUE CHIP CLIENTS



SIEMENS



GROUP ACTIVITY

Sectors & Services



RENEWABLE ENERGY

- Solar – PV
- Solar – CSP
- Wind
- Micro-Hydro



MINING

- Iron Ore
- Coal
- Rutile
- Gold
- Platinum
- Diamond



METALS

- Rolling Mills
- Process Lines
- Furnaces
- Castings
- Sinter Plant
- Coke Ovens



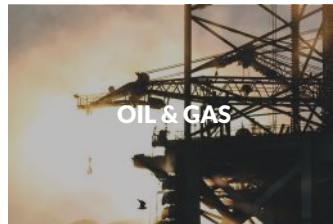
ENERGY

- Coal Fired Power Plant



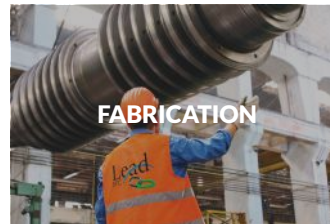
TRANSPORT & INDUSTRIAL

- Tunnels, Roads & Trains
- Cement Factories
- Water Management
- Water Purification
- Power Plants
- Automotive Plants



OIL & GAS

- Tank Farms
- Rail Loading Arms
- Pipe Lines, Pump Stations
- Refineries
- Petro-Chemical
- Fertilising Plants



FABRICATION

- Piping
- Structural Steel
- Vessels
- Tanks
- Conveyors & Structures



BULK MATERIAL HANDLING AND STORAGE

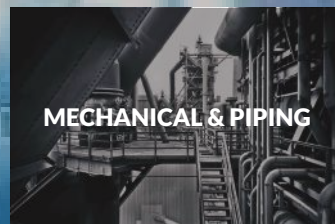
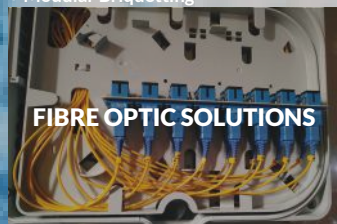
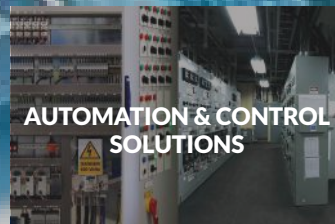
- Grain
- Batching and Mixing
- Cement Batching
- Bulk Material Storage



- Modular Plants



- Dense Media Separation Plants
- Crushing & Screening
- Wet and Dry Grinding
- Wet and Dry Classification
- Gold Modular
- Modular Briquetting



SPECIALITIES & CAPABILITIES

Project Management

- Use PMI PMBOK Methodology for Engineering/ Construction Projects
- Project Managers Certified as Project Management Professional (“PMP”)
- Experienced over a wide range of engineering disciplines to effectively implement projects

Multi-disciplined Engineering

- Registered Professional Engineers (“Pr Eng”)
- Full SMEIP Engineering Capacity & Capabilities
- Use Partners for Civil & Process Engineering
- Capacity and Capability for:
 - » Scoping Studies
 - » Multi-disciplinary Pre-feasibility and Feasibility Studies
 - » Basic and Detail Engineering
 - » Project Execution and Delivery

3-D Plant Layouts



Engineering Tools

Electrical

- DigiSilent
- Etap
- PVSyst
- Cable Sizing, Cable Length & Racking Tool

Draughting

- Auto CAD
- Autodesk Inventor
- Microstation V8
- Eplan

Mechanical & Piping

- Procon for Structural and Civil Designs
- Autocad Plant for Piping Designs
- Inventer for 3D Modelling and Equipment Designs
- Caesar II Intergraph for Pipe Stress Analysis
- ISO-metric Piping Layouts
- Fabrication Shop Detailing

Instrumentation

- Intools Smartplant
- P&IDs

Specialist E&I EPC Solutions

Instrumentation & Control

- Detail Engineering & Drawings
- Software Development:
 - » DCS, PLC, SCADA and ESD
 - » Variable Speed Drives
 - » Manufacturing Execution Systems Interfaces
 - » HMI Graphic Design & Development
- Control Equipment & Instrument Cabling
- Fibre Optic Installations
- PLC and Process Control Systems
- Field Instruments & JB's
- Building Management Systems
- Fire Detection
- Plant Telecommunications Systems
- Process and Pneumatic Hook-ups
- Instrument Calibration and Loop Checking

Power & Electrical

- Detail Engineering & Drawings
- Electrical Power System Studies and Modelling in DigiSilent PowerFactory

...continued

- Electrical Infrastructure:
 - » Switchyard
 - » MV Switchgear, Transformers, MV Cabling
 - » MCC's LV Switchgear, LV Cabling
- Electrical Controls
- Small Power & Lighting
- Earthing & Lightning Protection

Structural, Mechanical & Piping

Instrumentation & Control

- ISO 3834- Part 2, (certified) Quality requirements for fusion welding of metallic materials - Part 2: Comprehensive quality requirements.
- Fabrication Capabilities for Mechanical & Piping consist of the following:
 - » Piping (Ferrous & Non-Ferrous)
 - » Steel Structures & Supports
 - » Pressure Vessels

Construction & Implementation

- Procurement
 - » Staging & Material Control
- Sub-Contractor Management
- SHERQ Management
- Installation and Erection
- Inspection and Testing:
 - » Factory Acceptance Testing "FAT"
 - » Site Acceptance Tests "SAT"
 - » Loop and Systems Testing
 - » Electrical Testing
- Commissioning Assistance
- Plant Maintenance

Disaster Recovery

- Tailored Management Approach Towards Disaster Projects
- Quick Mobilization
- Efficient Procurement Structure
- Quick Access to Construction Material
- Close Collaboration with Suppliers
- Vast Experience and Excellent Track Record In Disaster Recovery Projects

RENEWABLE ENERGY EXPERIENCE

Renewable Energy Experience

The following personnel are available on projects:

- **H. Engela:** Project Director. Actively involved with PV Projects for the past 8 years. Project Director of Installation Company for Kalkbult 75MWp Project and Jasper 75MWp Project.
- **J. Grobler:** Construction Management Philippines, 22.36MWp, Clark Solar Project.
- **N. Odendaal:** Project Manager for more than 3MWp Rooftop Installations
- **A. Wilken:** Quality Manager Philippines, 22.36MWp, Clark Solar Project, 10MWp Tororo Uganda
- **D. Bothma:** Quality Inspector for Structure & PV Module Installation for Kalkbult 75MWp Project. Quality Inspector for Electrical & PV Module Installation for Jasper 75MWp Project. Site Manager 10MWp Tororo Uganda
- **A.J. Nieuwoudt:** HSE Manager for Kalkbult 75MWp Project, Jasper 75MWp Project, Tororo 10MWp Uganda

Two of our many Renewable Energy projects



!KaXu Solar One
2013



Jasper PV Plant
2014

PROJECT EXTRACTS

Earthing Cable Replacement Project

Sasol Secunda - Unit 003

Loading & Offloading Stations Upgrade at Nitro Fertilizers

Sasol Secunda

6.6kV Board Replacement

Midlands Utilities

SGEPP Modification Auxiliary HIP Containers Project – EPC E&I Construction

Sasol Sasolburg

EPC for Replacement of Pilot Burners

Sasol Secunda

Lighting Replacement Upgrade Project for Sanral

Huguenot Tunnel

Unit 350 XV 1002 Reinstatement Execution Project

Sasol Secunda

Mills Feeder Drive Renewal Phase 2 Boiler 5E Project

Sasol Secunda

PROJECT IMAGES



Manufacturing of Support Structures
AMSA Vanderbijlpark

Relocate Instrument & Electrical Boxes at Unit 58
Sasol Secunda

Replacement of 3.3kV Boiler Board No. 6
Sasol Secunda

Main Electrical, Control & Instrumentation Upgrade Project
Sivest NCP Alcohols

Liquid Sulphur Degassing E&I Construction Project
Natref

Ammonia SIL Construction Project
Sasol Secunda

1MW PV Augmentation EPC Project
ACWA Solafrika - Bokpoort

Cable Rack Replacement at Unit 203.
Sasol Secunda

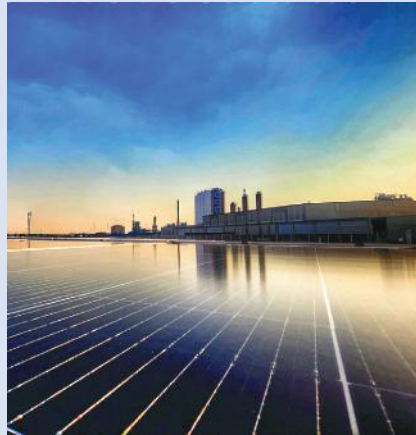
Wax Reflux Pumps Modification & Downcomer Support Beam Lowering Project
PDPS

VD Equipment Installation Project - Mechanical & Electrical Construction Works
Scaw Metals Germiston

PROJECT IMAGES



PROJECT IMAGES



Unit 003 & 203 earthing & Cable Rack BEP
Sasol Secunda

Fuel Oil Solids Reduction Project
Natref

SIL Project
Sasol South Africa Ltd

Main Electrical, Control and Instrumentation Project
NCP Alcohols (Pty) Ltd

PF Boiler HP Valve Replacement
Sappi Southern Africa Ltd

SGEPP Modification Project
Plant Design and Project Services (Pty) Ltd) - PDPS

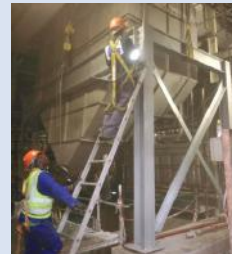
Utilities 6.6kV Board replacement
Sasol South Africa Ltd

Loading and Offloading Stations Upgrade
Sasol South Africa Ltd

Inside Ash Cable Replacement
Sasol South Africa Ltd

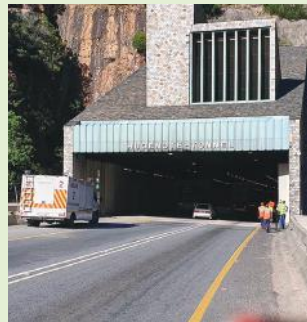
Catalyst Plant Conveyor VSD Control Circuit Upgrade
Sasol South Africa Ltd

PROJECT IMAGES



PROJECT IMAGES

PROJECT IMAGES





OUR COMPANY

Why choose LeadEPC?

“

- People with a “Can-Do” attitude
- Level 1 BBBEE (More than 51% Black Ownership)
 - A solid track record in work done for Blue Chip Clients over the past 10 years
 - More than 3.3m man-hours without LTI
- Fabrication shop & Engineering office in Vanderbijlpark
 - Workshop & Engineering office in Secunda
 - Proven systems and processes
 - Innovative value add solutions
 - Flexible contracting arrangements
 - Specialists in Disaster Recovery
 - LeadEPC adds value!

“LEAD FROM THE FRONT IN SERVICE EXCELLENCE AND COMMITMENT”

+27 (0)16 933 3925
CONTACT@LEADEPC.COM
S 26° 41' 47.908"
E 27° 49' 54.224"

LEADEPC HOUSE, GRAVITAS OFFICE PARK
17 VAAL DRIVE, SYLVIAVALE,
VANDERBIJLPARK, 1911
PO BOX 2659
VANDERBIJLPARK, 1900